

## Window Installation

To start off, take the window crate and place in near the window opening that it will be placed in.



Cut the band straps that are around the window crate.



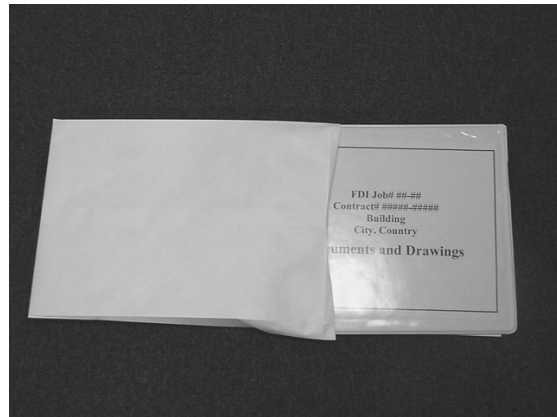
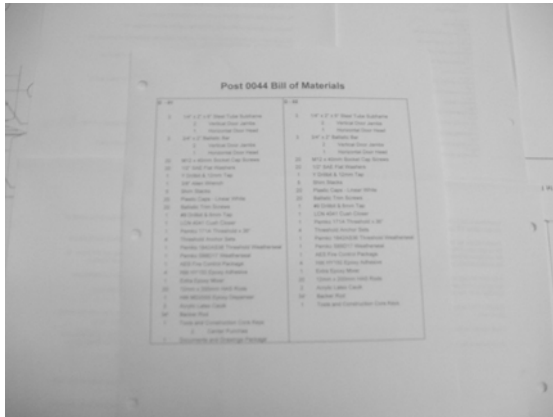
Pry the lid of the crate off with a crowbar and place lid aside.



Remove the contents of the cavity of the crate and lay out on floor.



All parts and components should be then checked against the master bill of materials list included with the installation manual.



Once all parts are accounted for, you can proceed with the installation of the door.

#### SEE WINDOW SUBFRAME INSTALLATION

Each FDI-FW15M/FDI-TW15M window is 42 pounds per square foot. Each FDI-FW05M/FDI-TW05M window is 20 pounds per square foot. Use of a lifting device is encouraged, but you must lift with equal pressure along the bottom. If you pick it up in the center only, you will break the glass.

Remove the face of the crate that says “Remove This Side.” The windows should be secured within the crate. If more than one window inhabits a crate they will come out one at a time by removing the next block off boards holding them in place while the others can remain in the crate.

Remove foam and plastic covering window.

Slide unit into the opening shimming equally between the steel tube subframe or concrete.

SEE CENTERPUNCH INSTRUCTIONS

Using a Y drill bit and a 12mm tap, drill and tap the frame head anchors in the center of the slotted holes.

Shims are provided to take up the space between the rough opening and the frame. Be sure to shim an equal clearance between the frame and the wall condition!



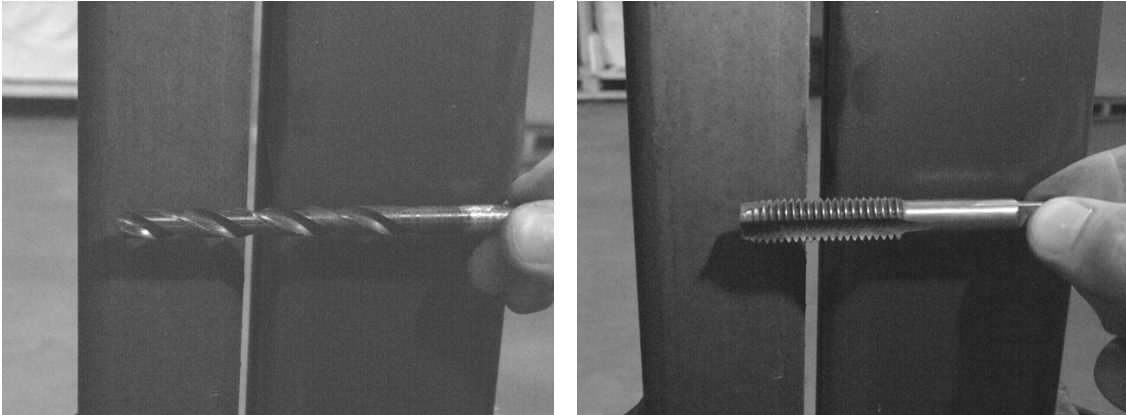
Next drill and tap the frame sill anchors in the center of their slotted holes.

Insert a frame anchor into each of the frame anchor holes in the sill of the frame.

Plumb the window frame jambs in, out, back, and forth.

SEE CENTERPUNCH INSTRUCTIONS

Using a Y drill bit and a 12mm tap, drill and tap the top and bottom frame anchor holes on the window jambs through the center of the slotted holes.



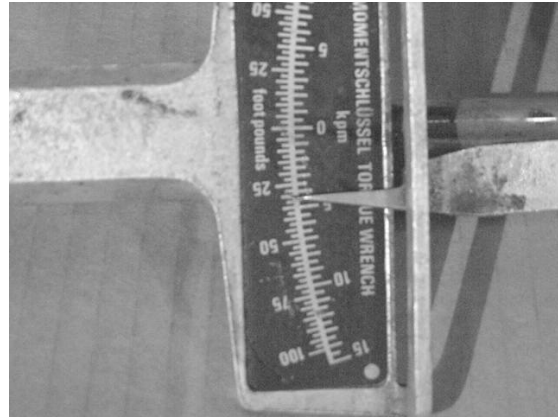
Insert a frame anchor into each of the newly drilled frame anchor holes in the frame.



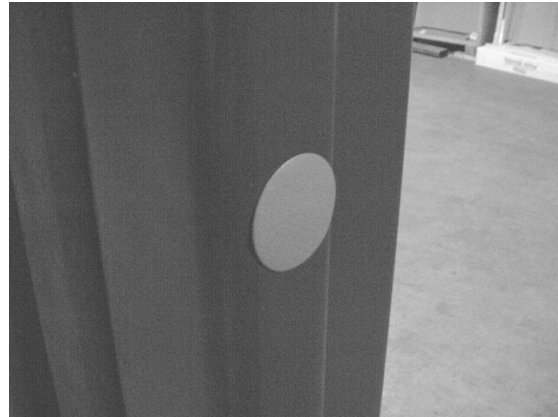
Snug and shim the bolts (do not tighten fully).



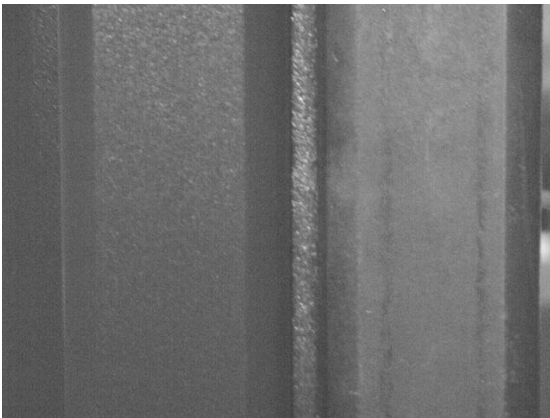
Secure all bolts in the doorframe to a torque rating of **40 ft.-lbs.**



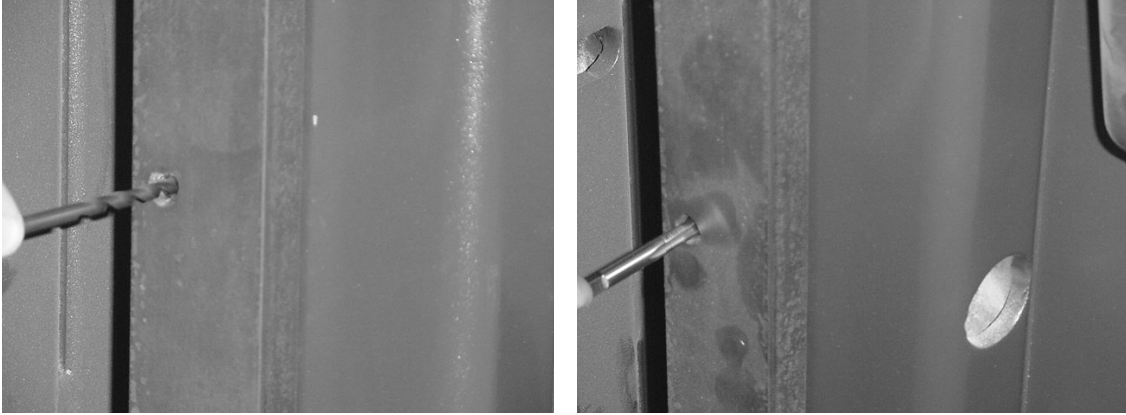
Place a plastic cap (usually size 1 ¼", provided) into each frame anchor hole.



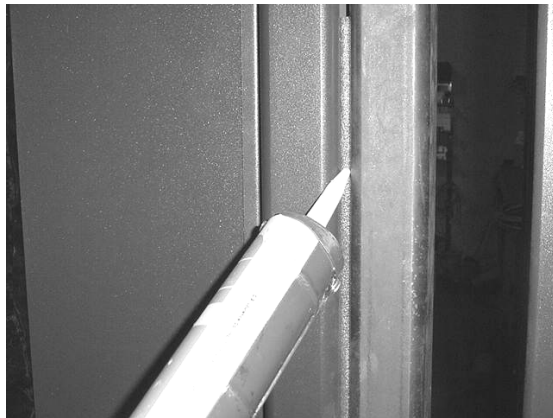
Insert backer rod between the window frame and the subframe on both sides of the window recessed about 3/8".



Attach ballistic bar by first drilling with a #9 drill bit and tap holes with a 6mm tap into the secure side of the subframe, embed, or wall per the contractor's request. The ballistic bar may have different placement specified by the contractor so it is important to consult the product details prior to drilling.



Caulk exterior of door between window frame and subframe.



Caulk between the ballistic bar and the window frame on the interior.

